



www.facebook.com/khanhbinhfa

<https://shopee.vn/kbhandmade>

0905.199.590

HƯỚNG DẪN GHÉP RẬP

B66 - 12 tuổi; 145-150cm; 40-45kg;

dài áo 60 cm; dài quần 34 cm;

Rập dùng cho vải thun

* Hướng dẫn in:

- Chọn máy in -> chọn giấy A4 -> chọn tỷ lệ (Scaling): 100%

- Chọn Auto-Center

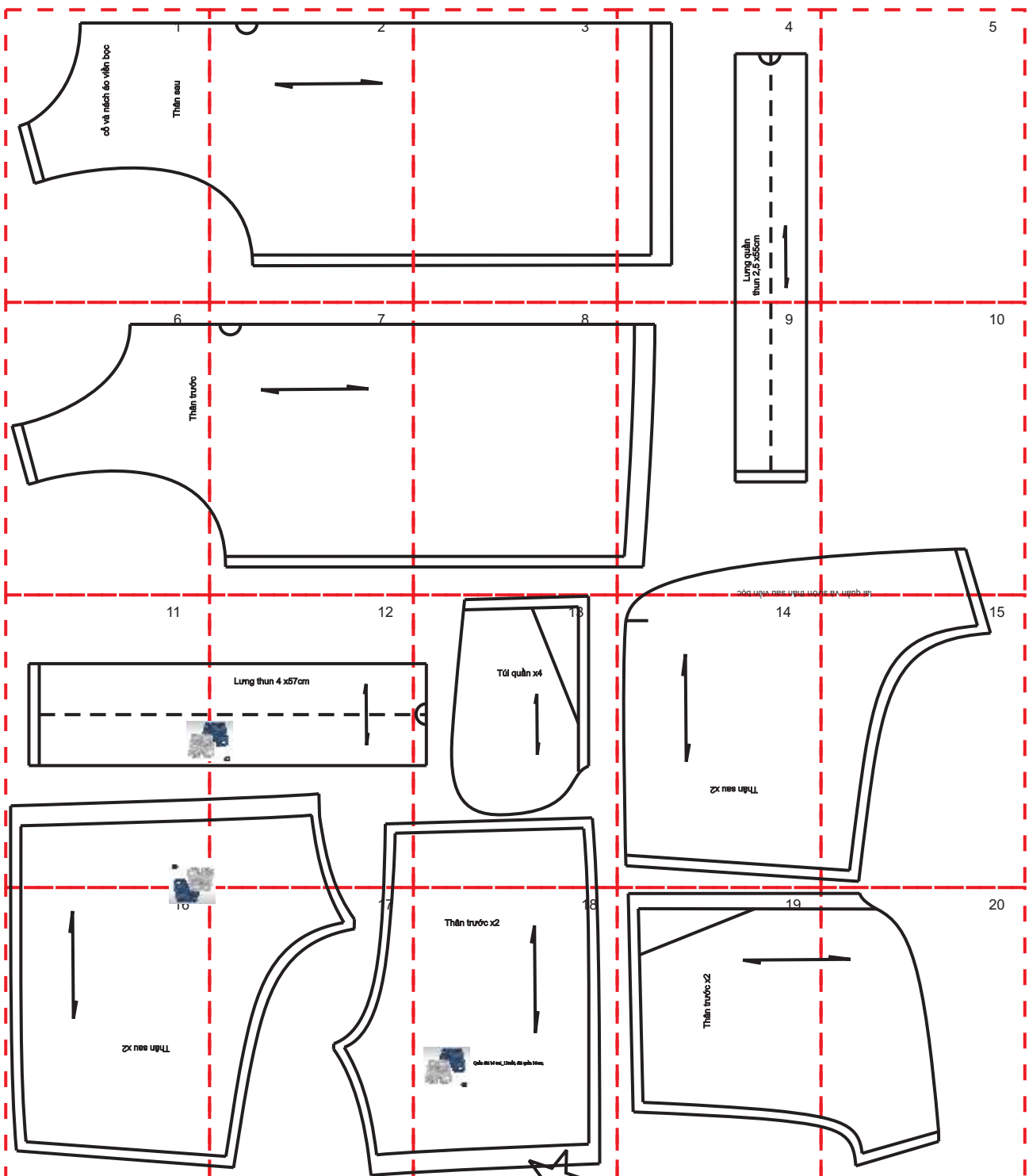
* Chú ý:

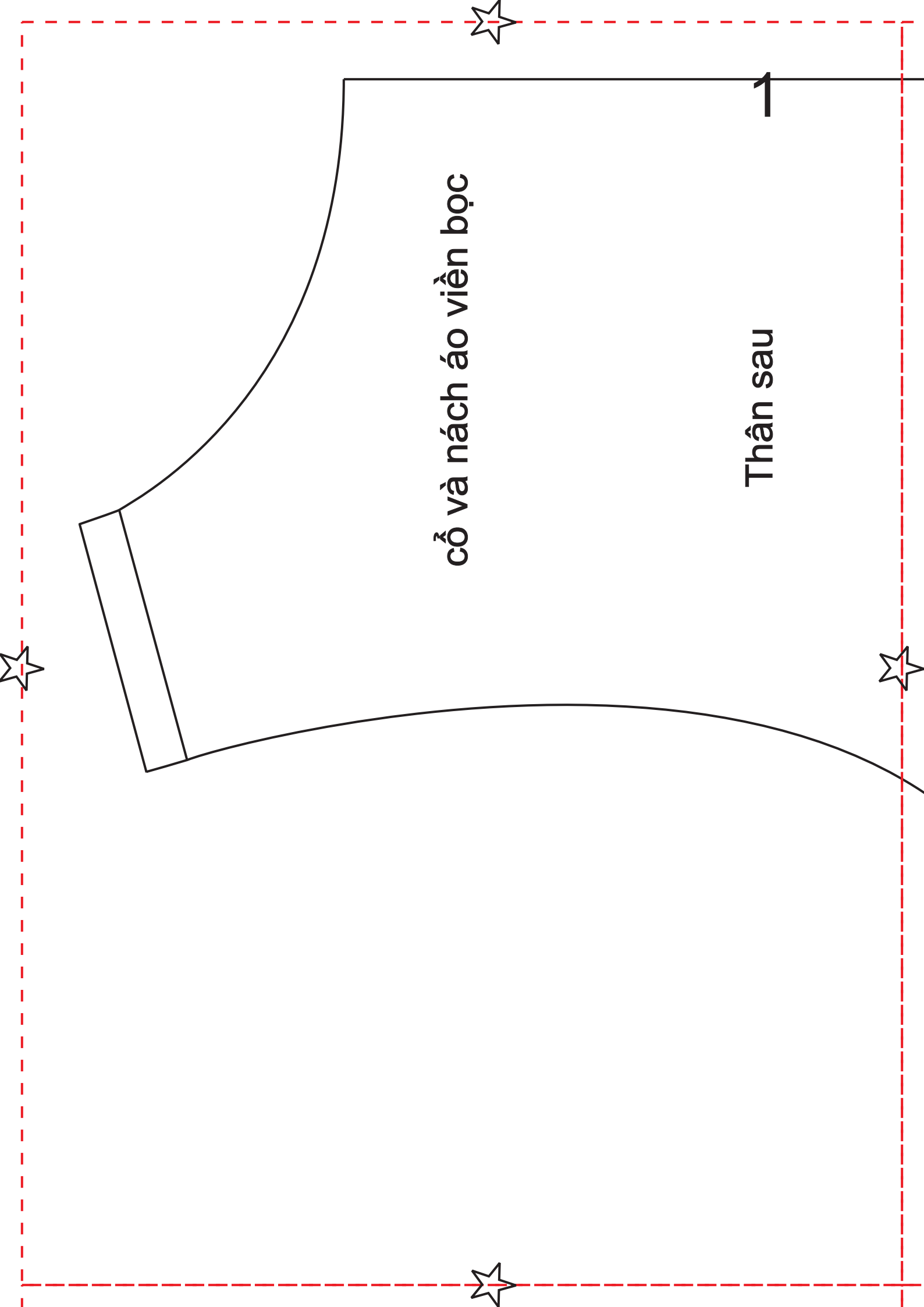
- Tất cả các rập đã chừa đường may

2cm



: Ký hiệu vải gấp đôi

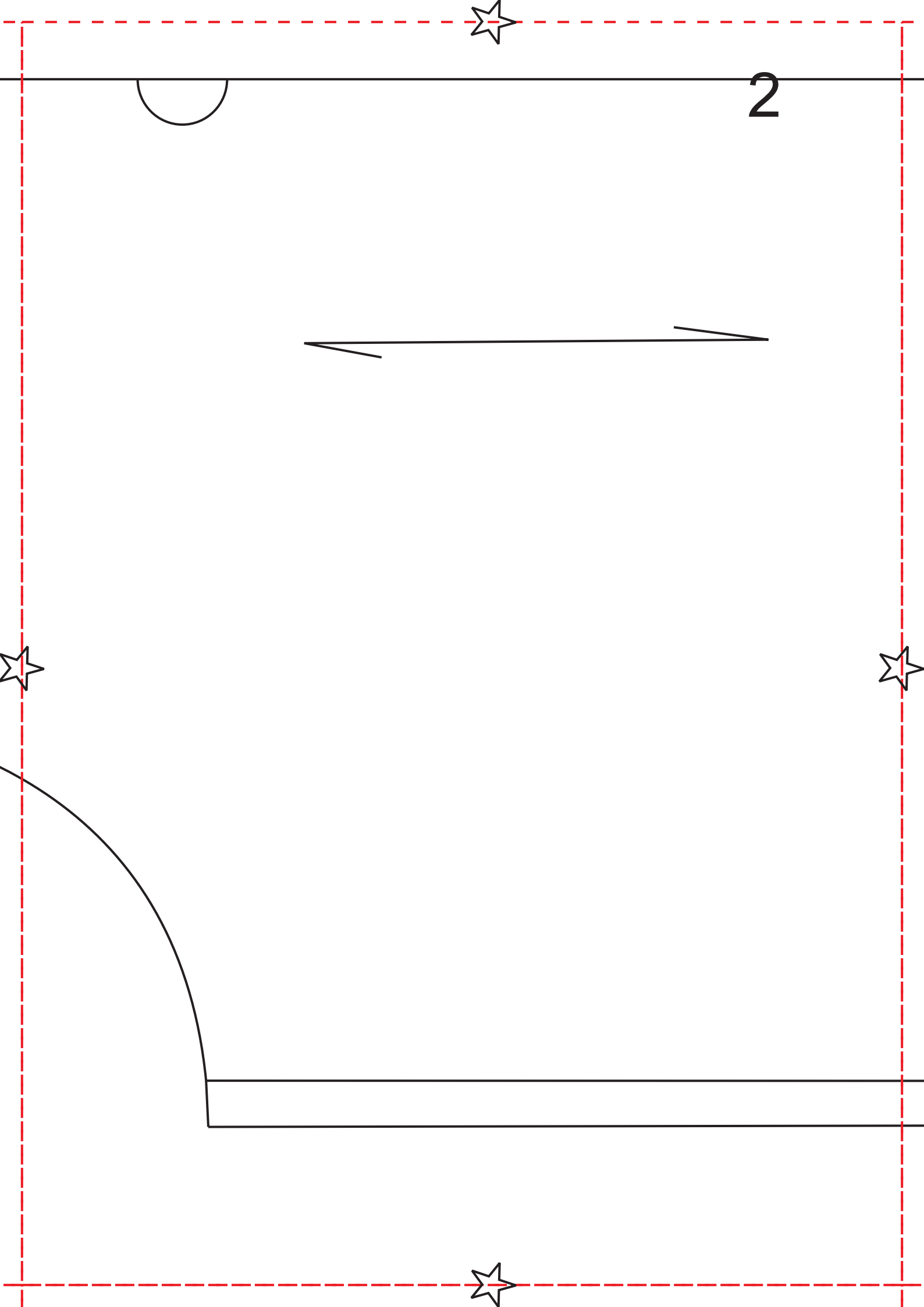


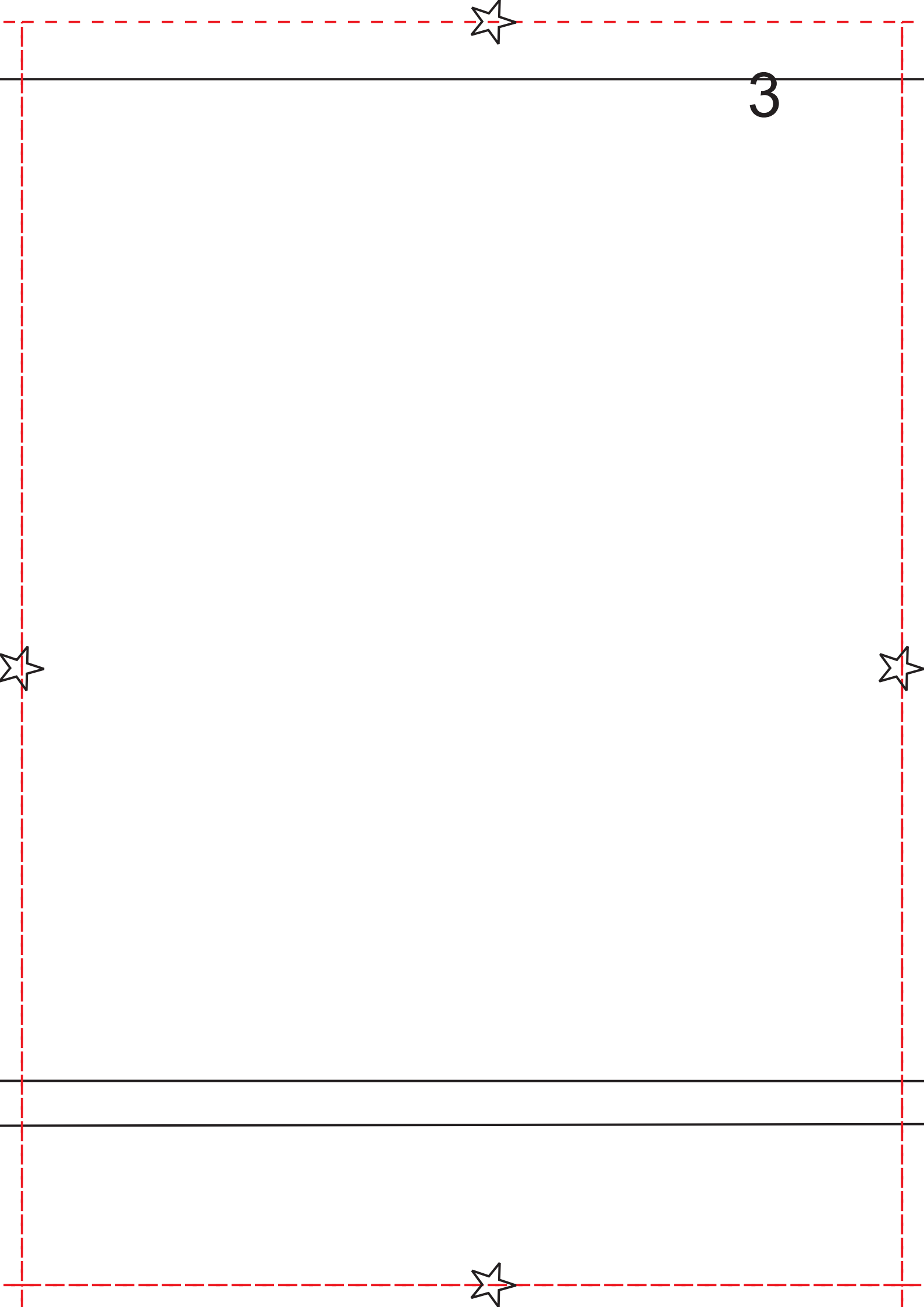


cổ và nách áo viền bọc

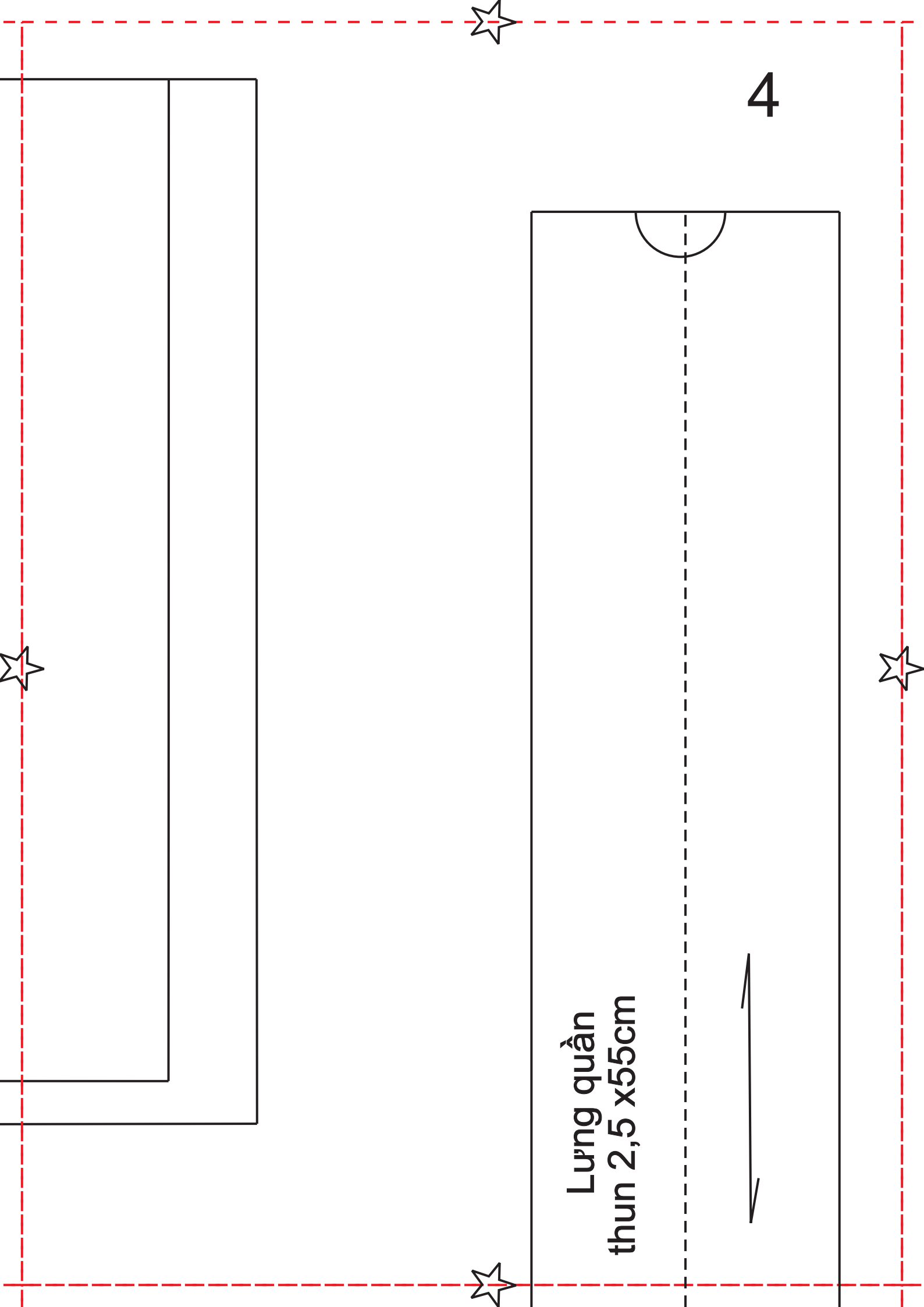
Thân sau

1





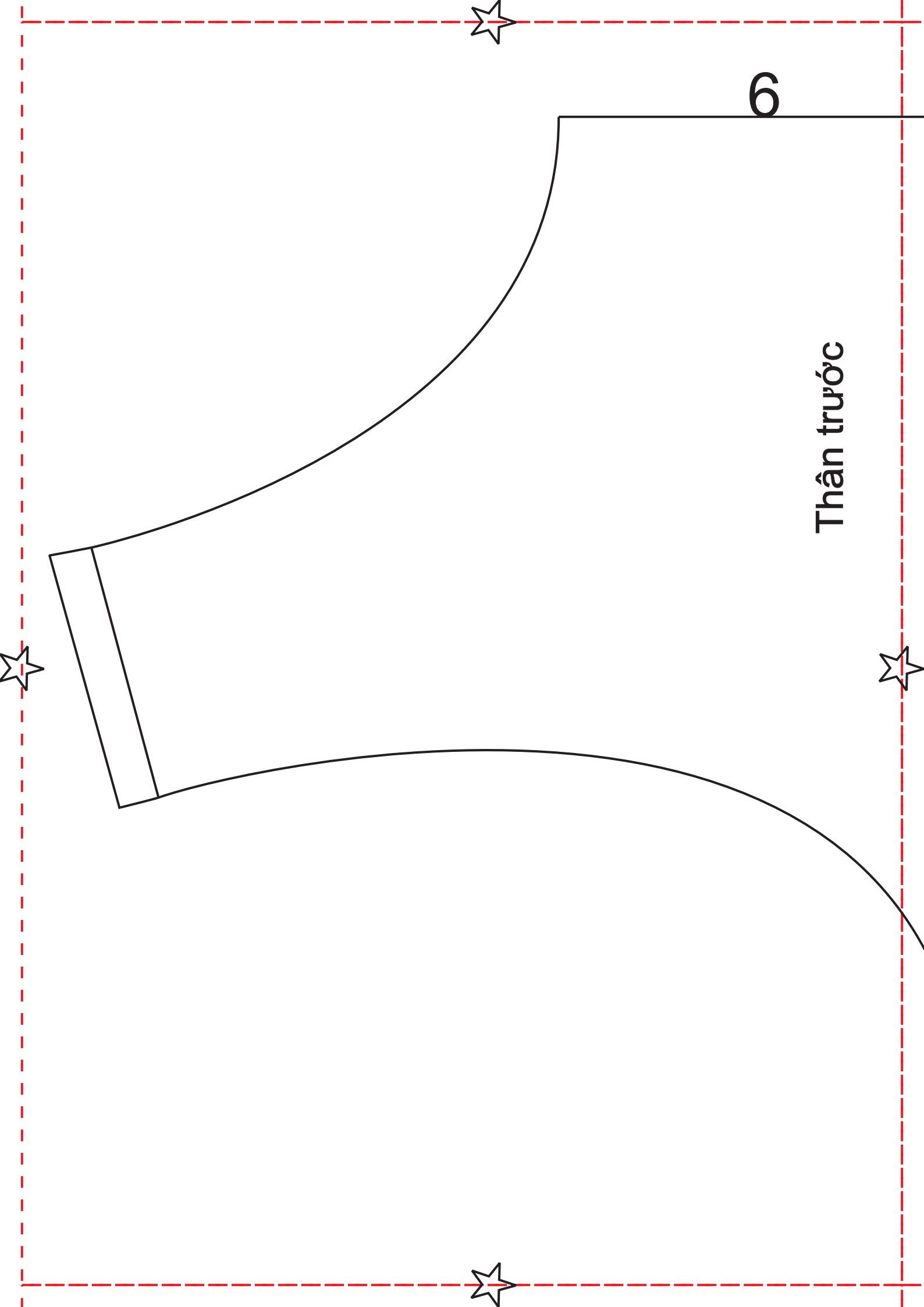
3



4

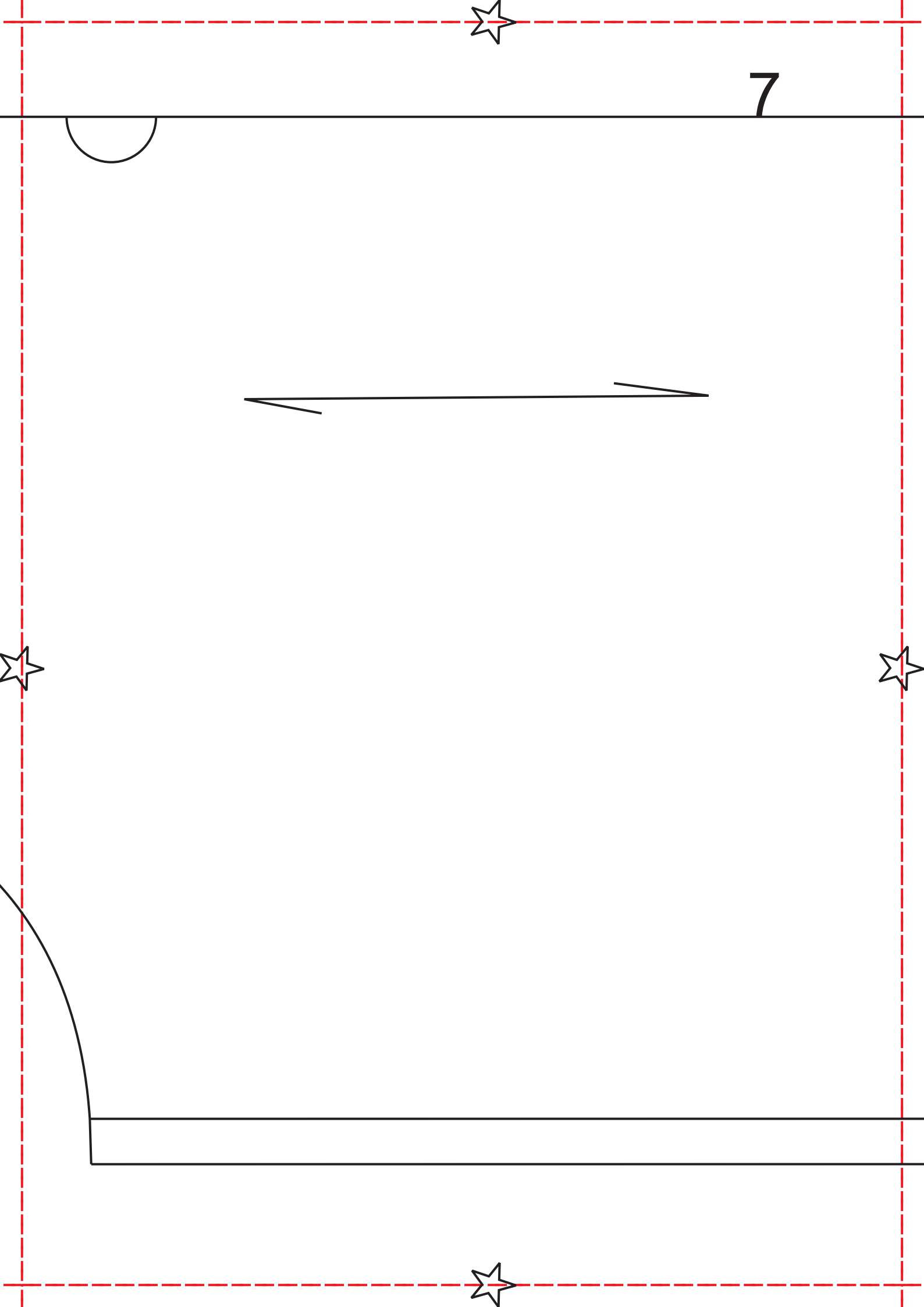
Lưng quần
thun 2,5 x 55cm





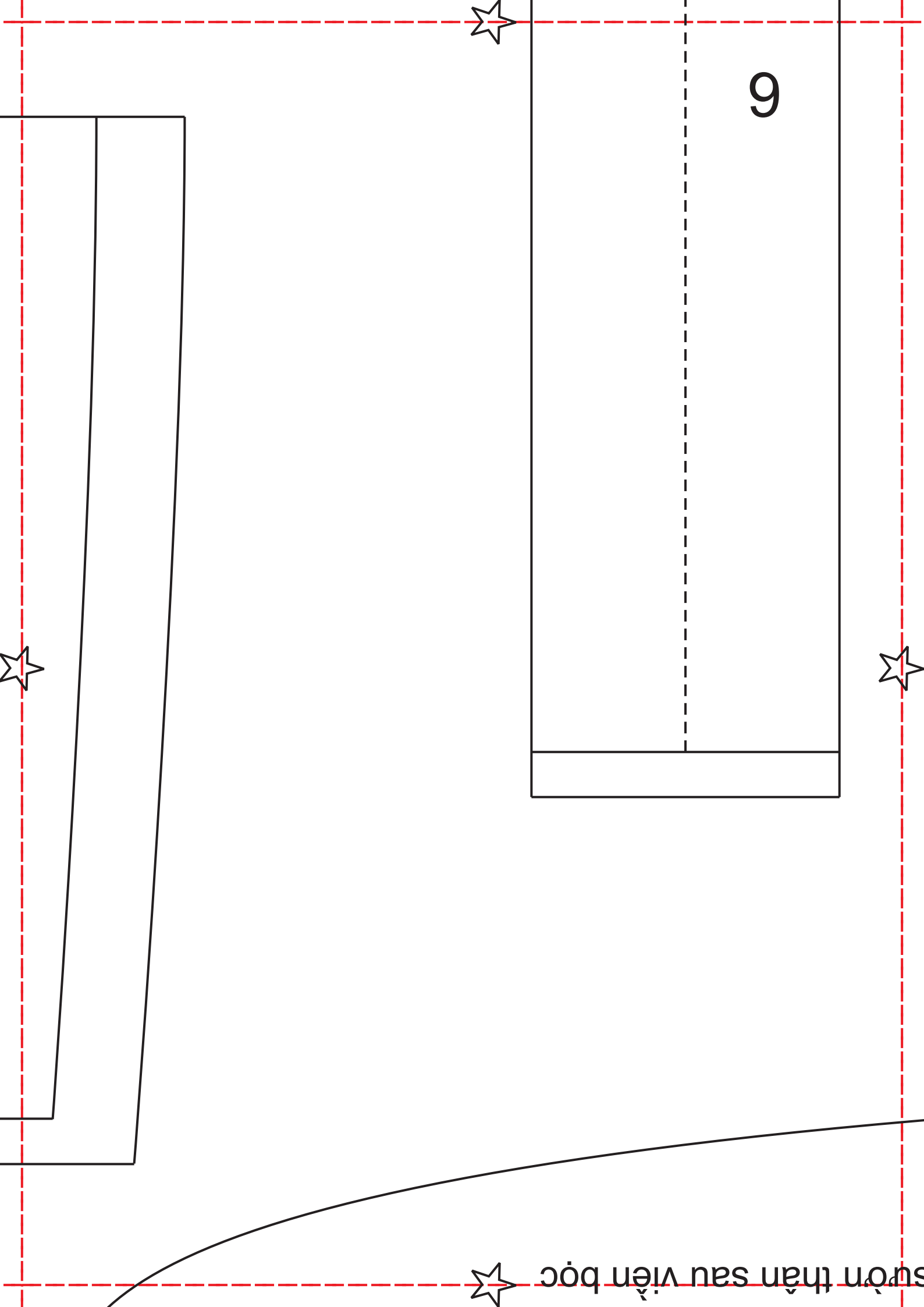
6

Thân trước



8





9

sườn thân sau viên bọc

10

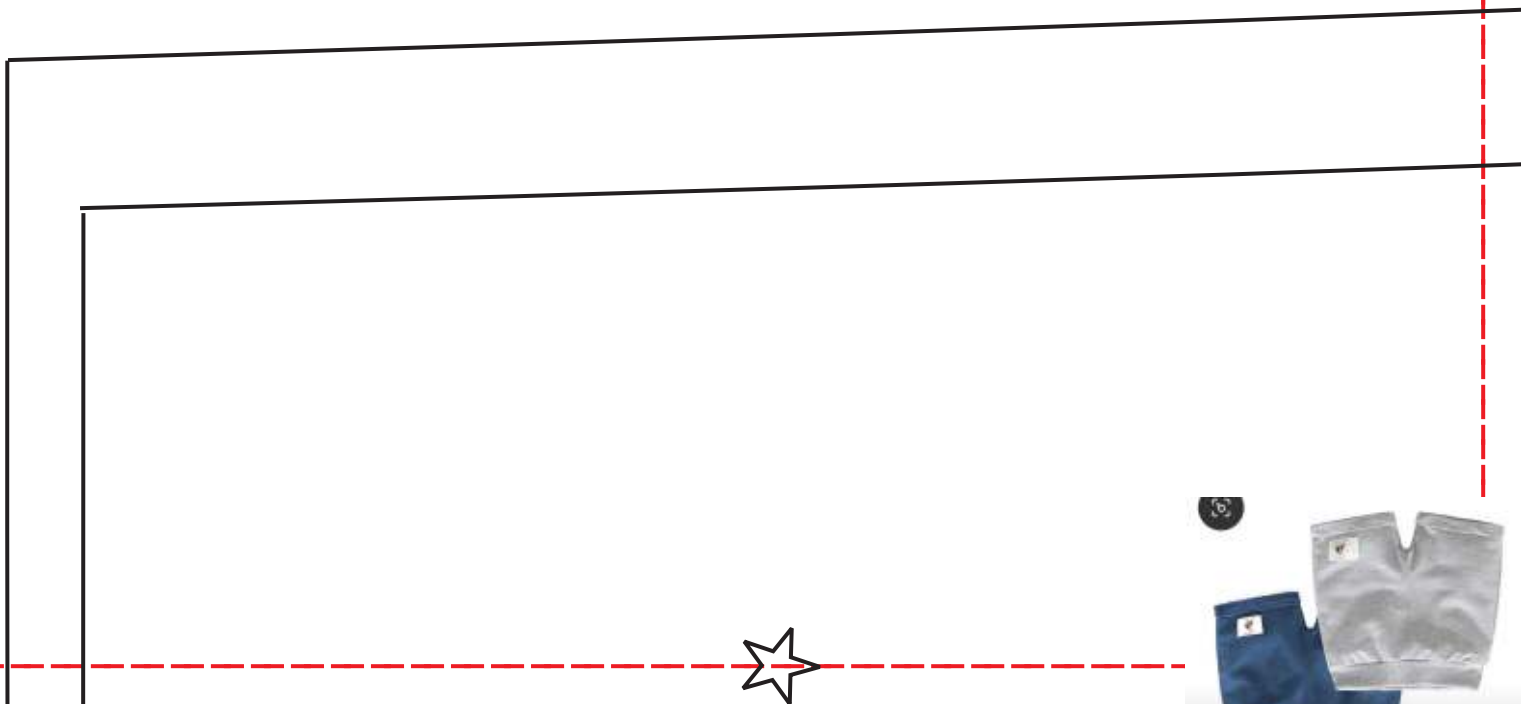
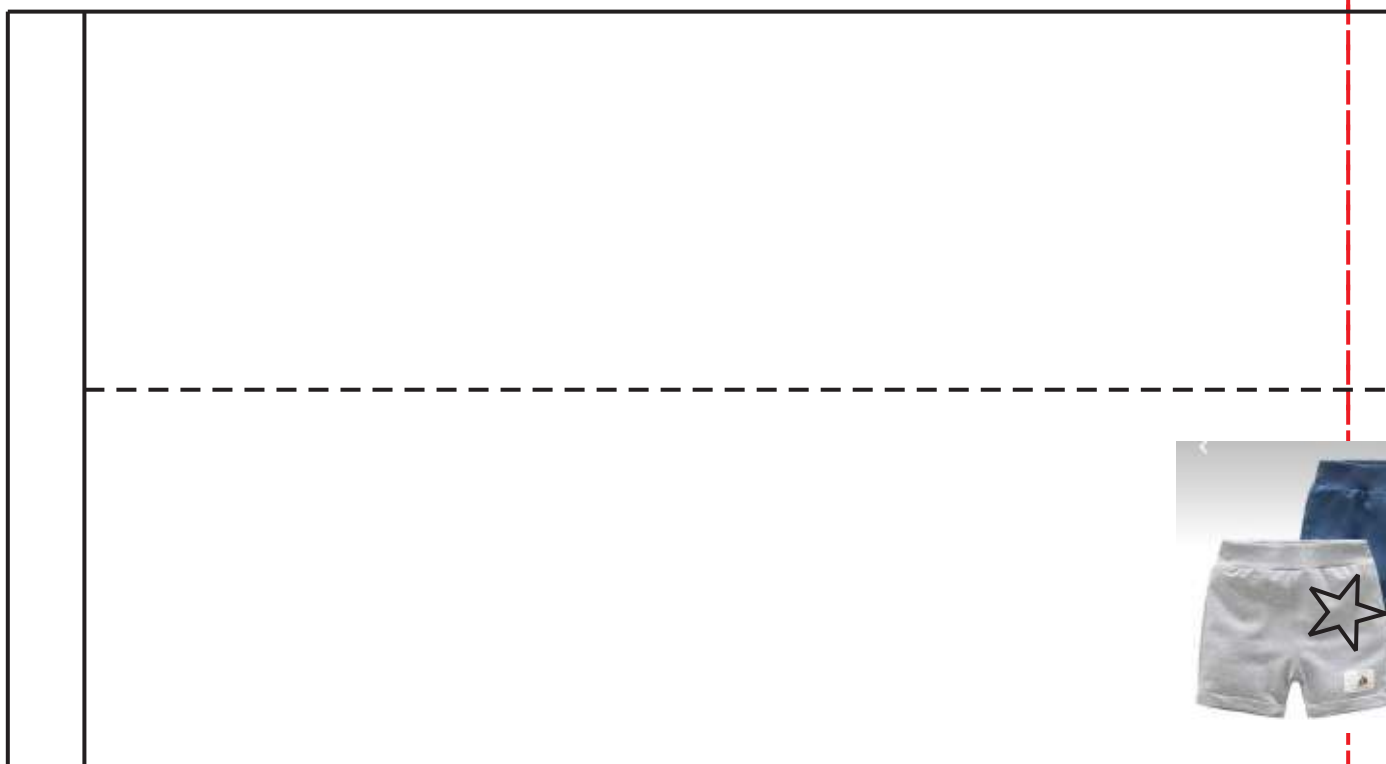


lai quàn và su

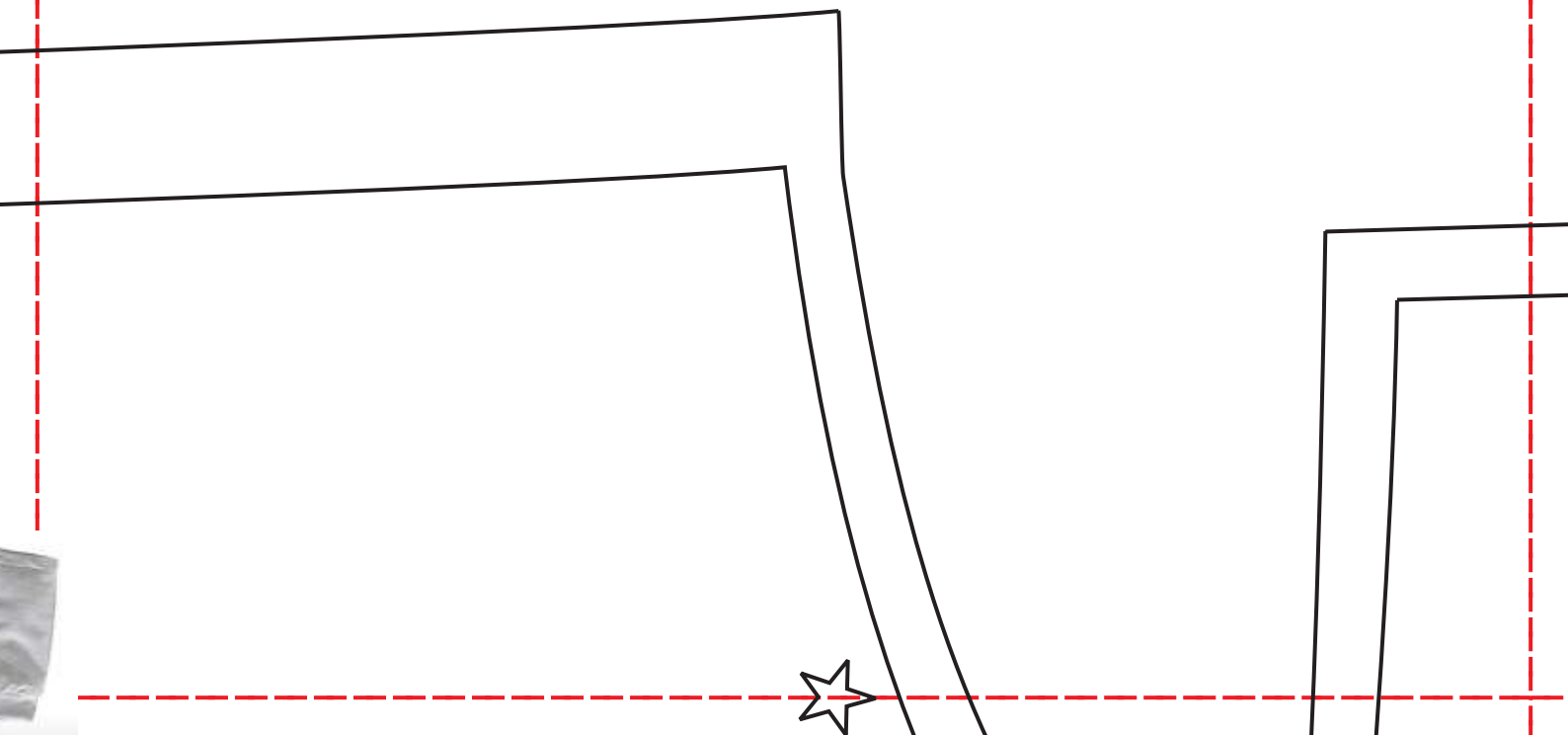


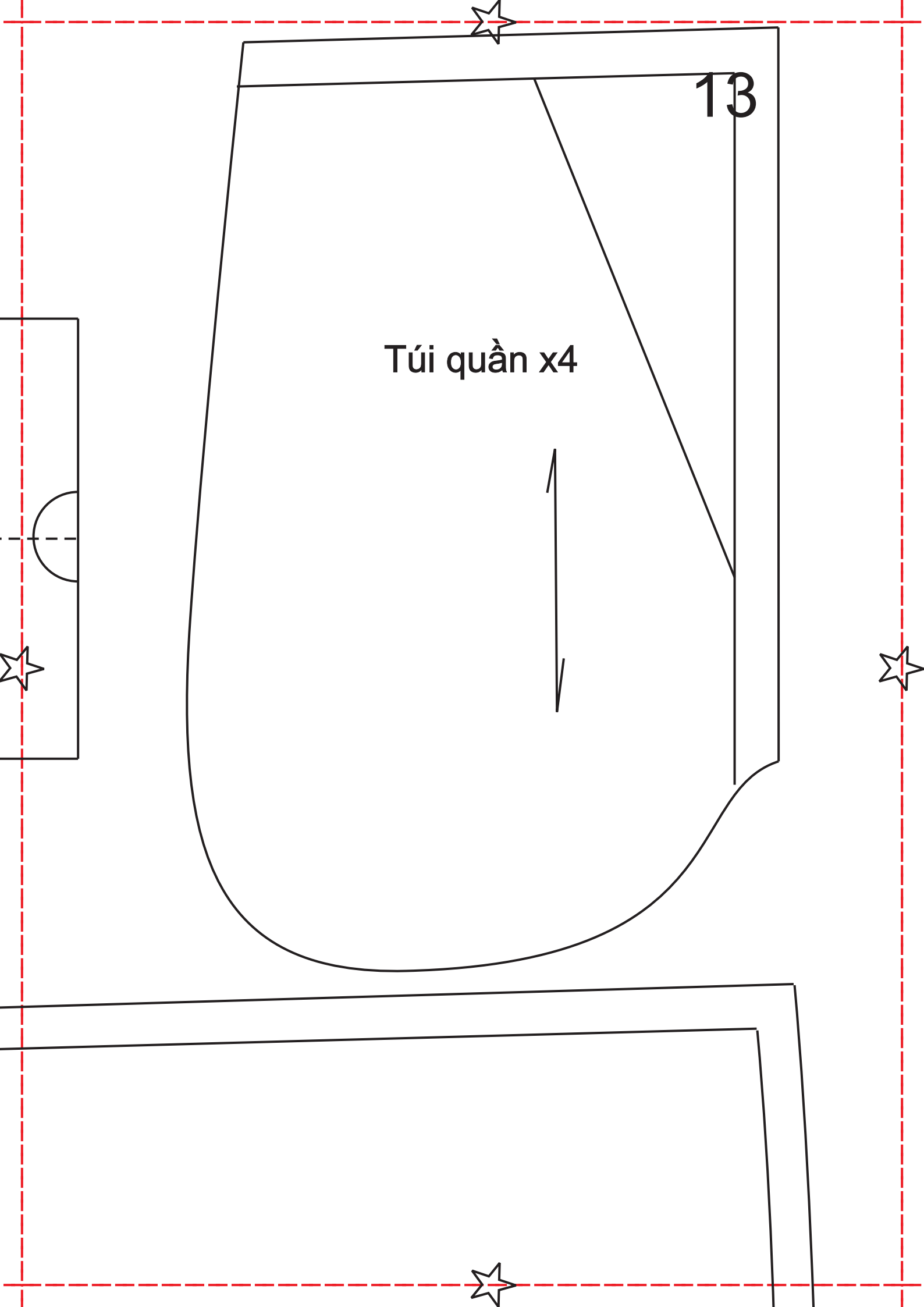


11



Lưng thun 4 x57cm





13

Túi quần x4



14



Thân sau x2



15





10

Thần sau x2





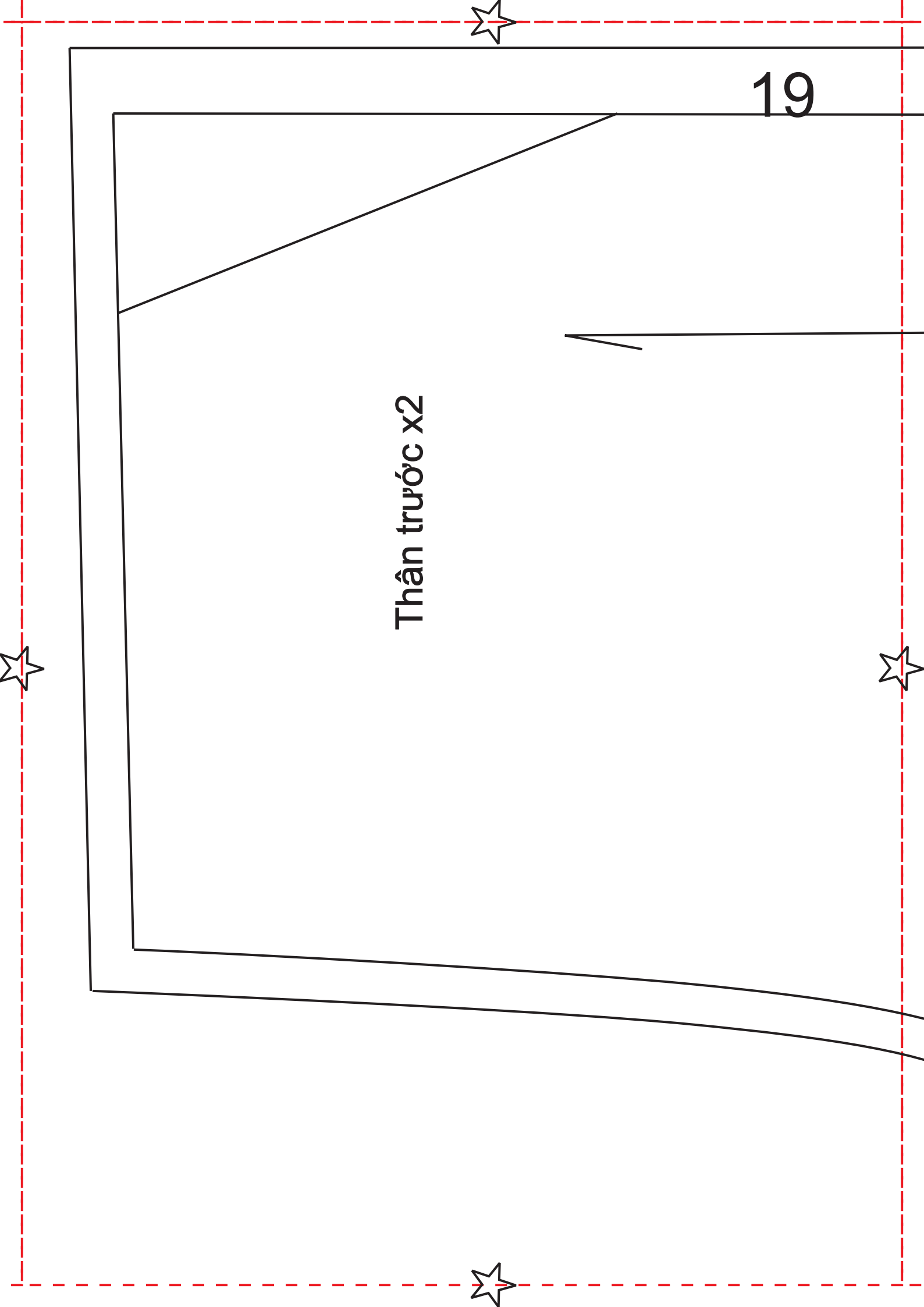
17



Thân trước x2



Quần đùi bé trai_12tuổi; dài quần 36cm;



Thân trước x2

19

20

